



UTS Insearch

UNIVERSITY OF TECHNOLOGY SYDNEY

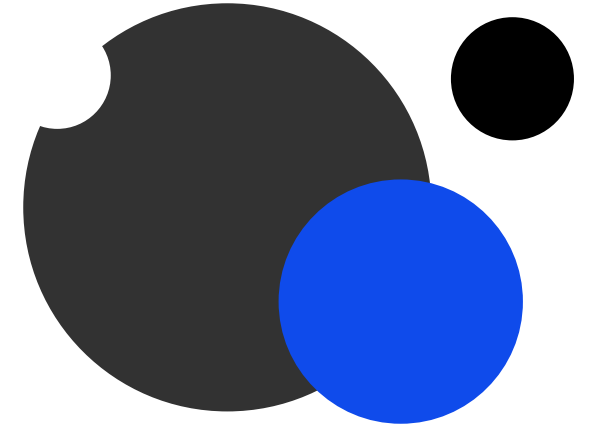


Thanks for joining our Admissions Webinar!

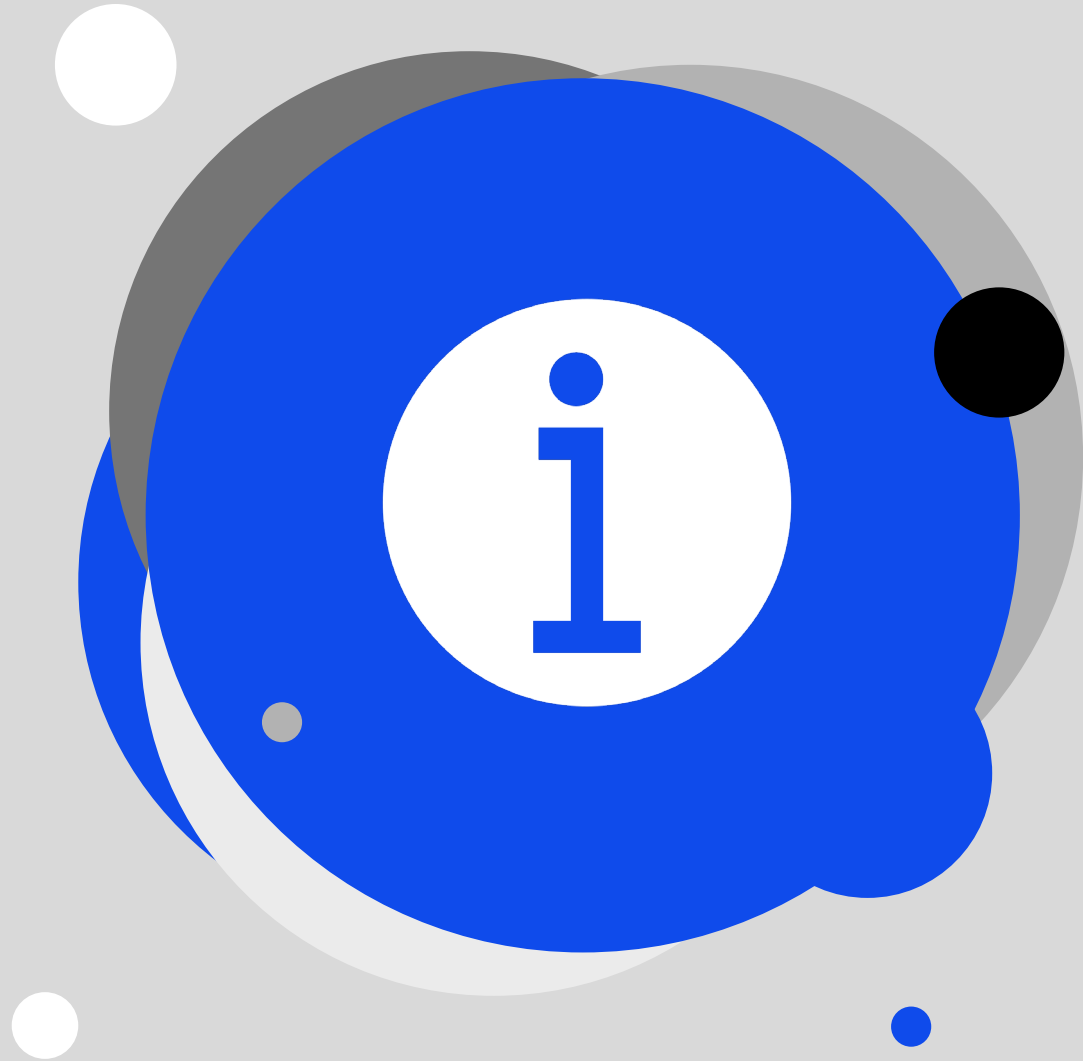
We'll be starting in a few moments...

Admissions Webinar

Agenda



10am	Welcome	Mariam Kartikatresni, Country Director
10.05- 10.45am	Admissions updates	Kat DeCarlo, Admissions Manager Stefani Sugiarto, Partner Manager.
	Refunds	Ray Litster, Registrar
	Indonesia Offer	Mariam Kartikatresni, Country Director
	Q & A	Panellists
10.45am	Close	Lilies Agustine, Partner Manager Stefani Sugiarto, Partner Manager



COVID-19 updates

For all our latest updates go to:

insearch.edu.au/au/coronavirus



Meet our presenters



**Kathryn
DeCarlo**
Admissions
Manager



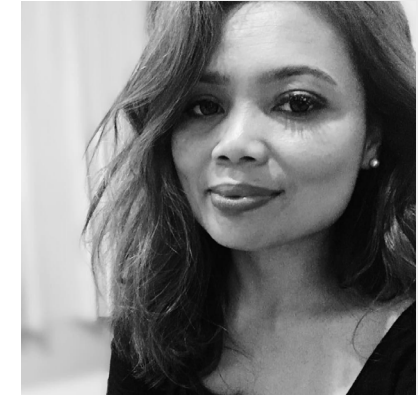
Ray Litster
Registrar



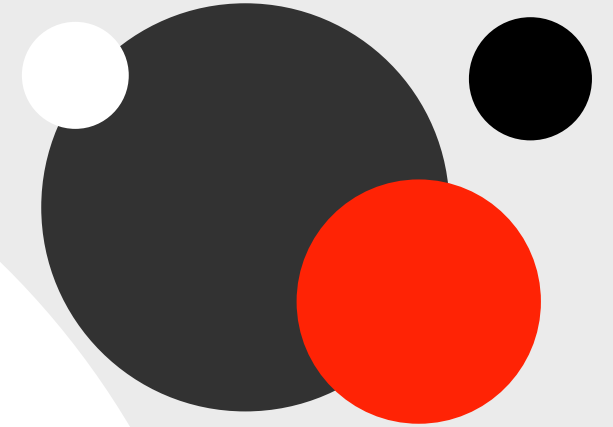
**Mariam
Kartikatresni**
Country
Director



**Stefani
Sugiarto**
Partner
Manager



**Lilies
Agustine**
Partner
Manager





Admissions update

Kathryn De Carlo, Admissions Manager
Stefani Sugiarto, Partner Manager

What we'll cover today



Remote learning options

Academic English update

Academic programs update

**COVID-19 refunds
Academic English**



**COVID-19 refunds
Academic programs**

Indonesia Offer

Contacts and important dates

Q&A

Remote learning options

- ✓ No visa required offshore and accessing remote learning
- ✓ When intend to travel and restrictions lifted valid student visas are required
- ✓ Offers are required to be accepted and payment made to commence studies and access remote learning
- ✓ Learning is only available through remote access until further notice

Academic English update

✓ High stakes English test validity extended for 2 years while testing centres remain closed

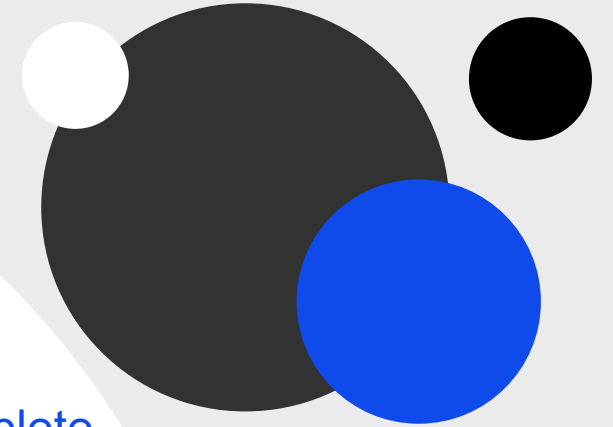
✗ VEPT is not currently available at @Insearch

🚩 Students with low IELTS and a large amount of English must defer to a later intake

🚩 Offshore students must complete a high stakes English test for visa application purposes and must meet immigration requirements when applying for a visa

✗ English Package Offers will not be issued where there is no high stakes test or VEPT

✓ Students will be offer have the option of taking the VEPT in an agent's office or UIG English



Academic Programs update

Permitted overlaps

Overlaps with Academic English and Academic programs are permitted

Providing a student attends the **compulsory Preparation Week** activities from Wednesday (24 June 2020, after exams on the Monday and Tuesday) the English results are not released until the Thursday

Predicted results

If students have predicted Academic results due to exams not being held, we will assess (based on what is provided) and **enable students to accept offers** during this time **based on predicted results**

Scholarships

Leadership Advantage Scholarship \$7,000
Dean's Merit and Outstanding Graduate Prize \$5,000
Pathway scholarship to UTS 50%
New
High Achiever Scholarship 25% -

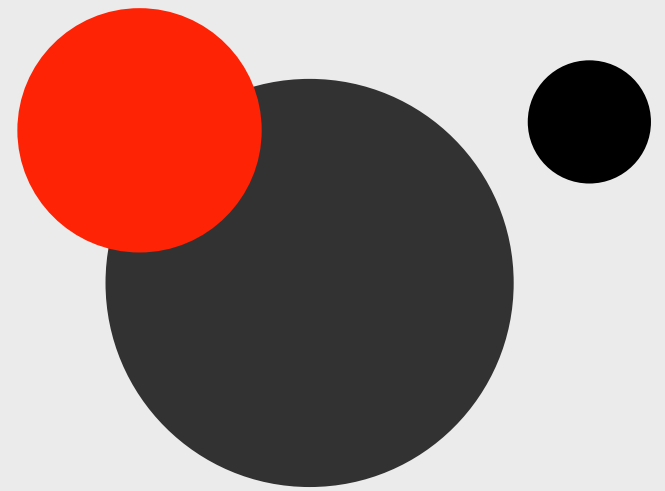


Refunds update

Ray Litster, Registrar

Academic English

Remote learning refunds

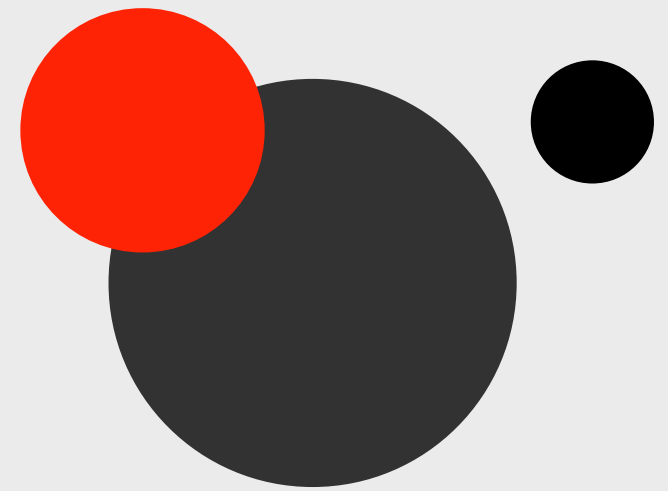


I'm an international student who is unable to arrive for Term 5 due to travel restrictions and I now wish to withdraw rather than commence remote learning.

YES! You are entitled to a full refund including the international student processing fee (ISPF) and UTS CoE fee.

Academic English

Remote learning refunds

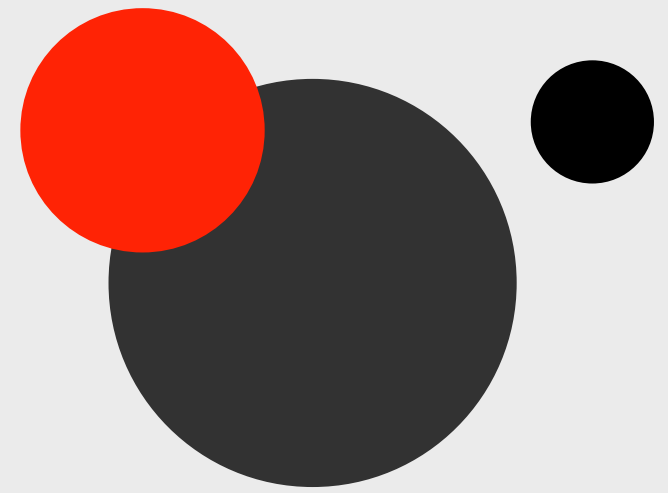


I'm an International student who wishes to be admitted for a future English (ELT) intake but am concerned that travel bans will prevent me from coming and that I may lose part of the fee if I then choose to withdraw close to the start of the semester.

YES! You are entitled to a full refund, including the international student processing fee (ISPF) and UTS CoE fee, provided a travel ban is still in place in your country of residence at the start of the term.

Academic English

Remote learning refunds

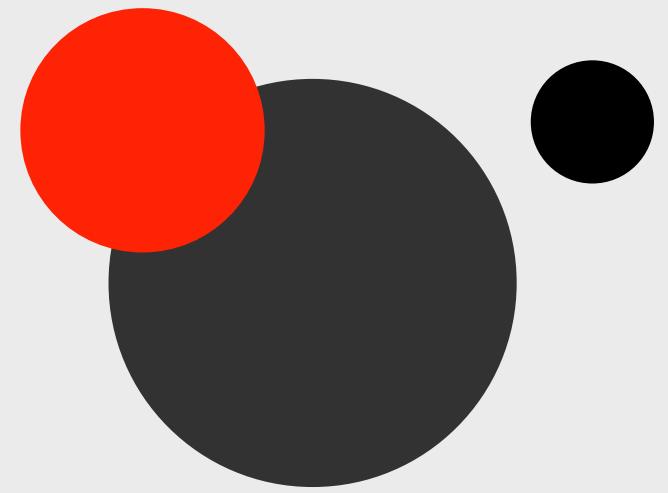


I'm an international student who has started remote learning in Term 4 or 5 but after starting the program I wish to defer.

YES! You can repeat the term without additional charge and no fail on record providing you have maintained 80% attendance. (For those starting in Term 6, the normal rules apply).

Academic English

Remote learning refunds



I'm an international student about to start Term 5 and I'm not sure if I will like remote learning, can I get a refund?

Normal rules apply for Term 5 and later terms.

Academic English

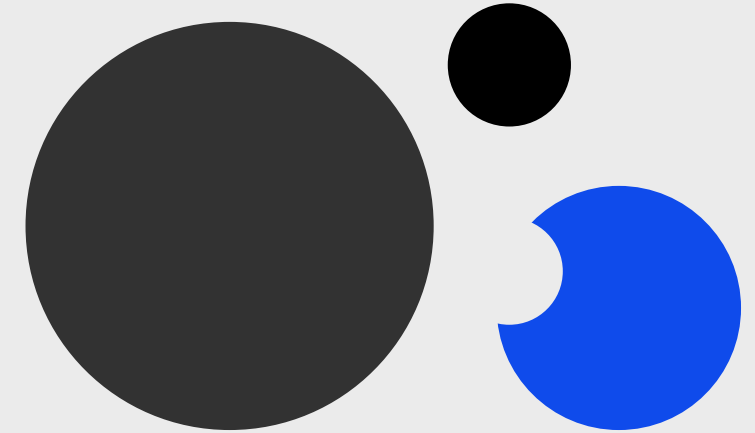
Remote learning refunds

I'm an international student studying by remote learning in Term 4 or 5. I fail a level.

You can repeat the failed level with no fee payable and no fails on record providing you have managed to maintain attendance of 80% or better. This is possible only once. (For those starting in Term 6, the normal rules apply).

Academic programs

Remote learning refunds

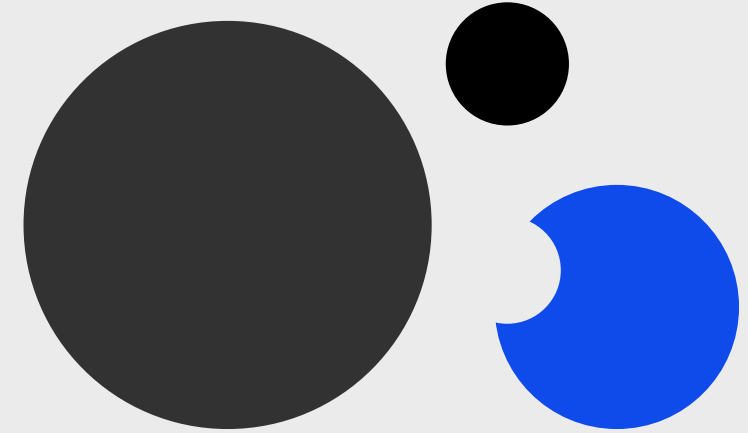


I'm an international student who is unable to arrive for Semester 2 due to travel restrictions and I now wish to withdraw rather than commence remote learning.

You are entitled to a full refund including the international student processing fee (ISPF) and UTS CoE fee.

Academic programs

Remote learning refunds

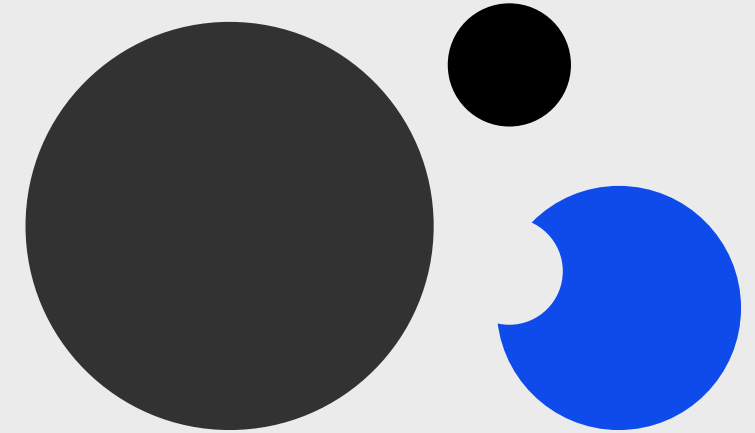


I'm an International student who wishes to be admitted for future semesters but am concerned that travel bans will prevent me from coming and that I may lose part of the fee if I then choose to withdraw close to the start of the semester.

You are entitled to a full refund, including the international student processing fee and UTS CoE fee, provided a travel ban is still in place in your country of residence at the start of the semester.

Academic programs

Remote learning refunds

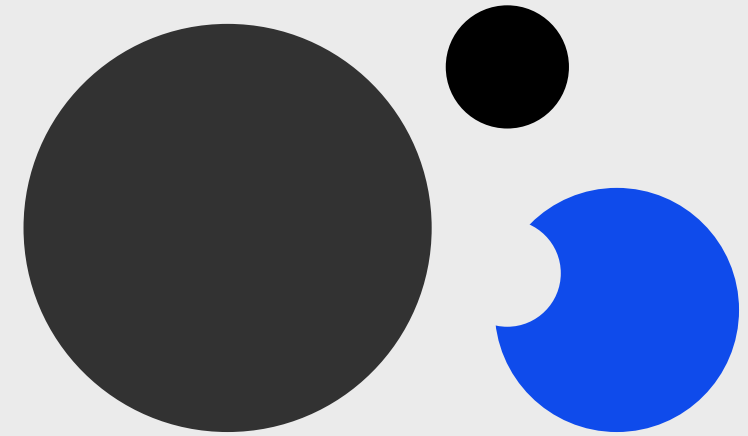


I'm an international student about to start Semester 2 course by remote learning, can I defer before or after census date?

You can repeat the semester without additional charge. No fails on record.

Academic programs

Remote learning refunds

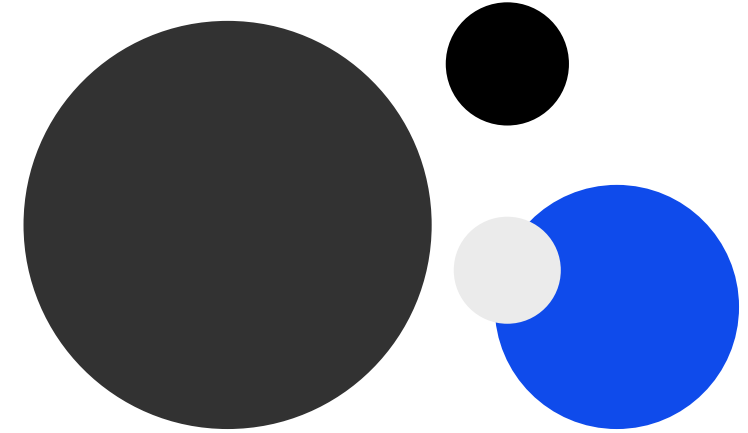


I'm an international or domestic student about to start Semester 2 course by remote learning. If I fail some subjects in Semester 2, what happens?

You can repeat failed subjects with no fee payable. No fails on your record.

Academic programs

Remote learning refunds



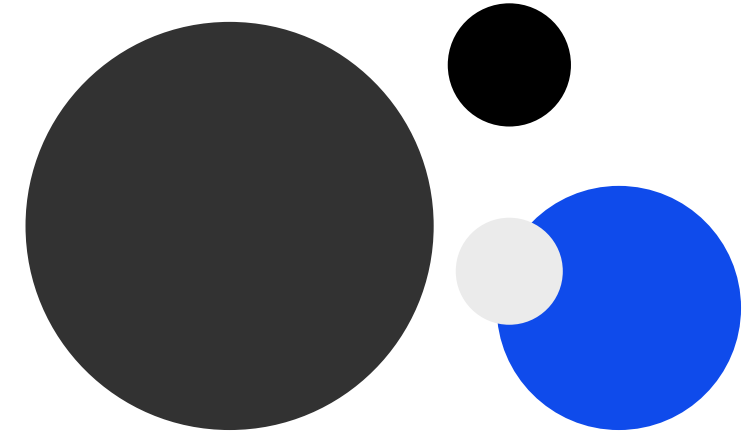
I'm an international student studying my first semester by remote learning in Indonesia but later hear that my visa application has been rejected.

If you are enrolled in your first semester, you can

- complete the semester and receive a transcript for what you have completed – NO refund available**
- Withdraw from the course without completing the current semester (no transcript) - refund of tuition fees available**

Academic programs

Remote learning refunds



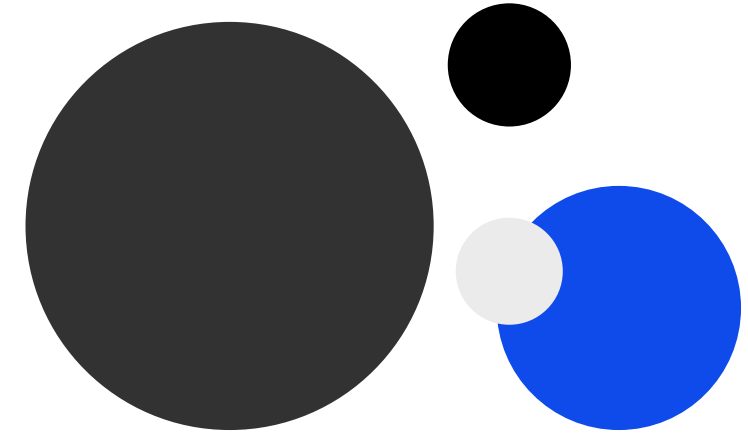
I'm an international student. If I complete my first semester by remote learning in Indonesia before I get a visa, then enrol in my second semester and later hear that my visa application has been rejected, what happens?

You can

- complete the second semester and receive a transcript for your second semester – NO refund available
- Withdraw from the course without completing the second semester (no transcript) - refund of tuition fees for your second semester available

2020 Important dates

Academic programs



Semester 2		Semester 3	
Commencement	22 June	Commencement	6 October
Orientation	22-26 June	Orientation	6-9 October
Census date	24 July	Census date	6 November

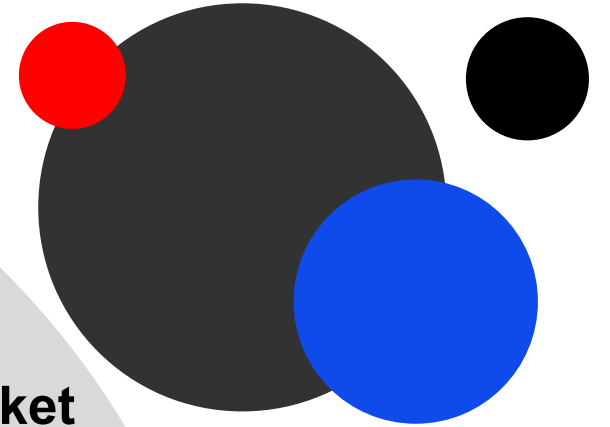


Indonesia update

Mariam Kartikatreni, Country Director

English Development Fund

- ✓ To support the students in the Indonesian Market who still require Academic English upgrade to fulfil the English requirement for entry
- ✓ This fund will pay for the Virtual Academic English course run online by UIG English
- 🚩 Channel Partners will nominate students for receiving this fund by contacting our Partner Manager
- 🚩 The provision of this to students will be considered on a case by case basis.



English Development Fund

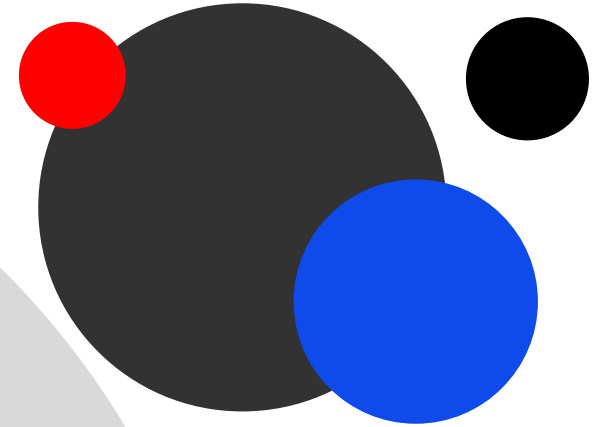
Process

1. CP contacts your PM to nominate a student to receive the fund.
2. Student takes the placement test at UIG English.
3. PM will inform Channel Partner on whether student is eligible to receive the fund.
4. Student or CP pays UIG English for the course in the amount.
5. Student enrolls into the English class.
6. Student successfully completes the course and makes payment to UTS Insearch for first semester Diploma course.
7. CP sends in invoice *or* student lodges a refund form along with PM recommendation.
8. UIG English will reimburse the amount paid back

English Development Fund

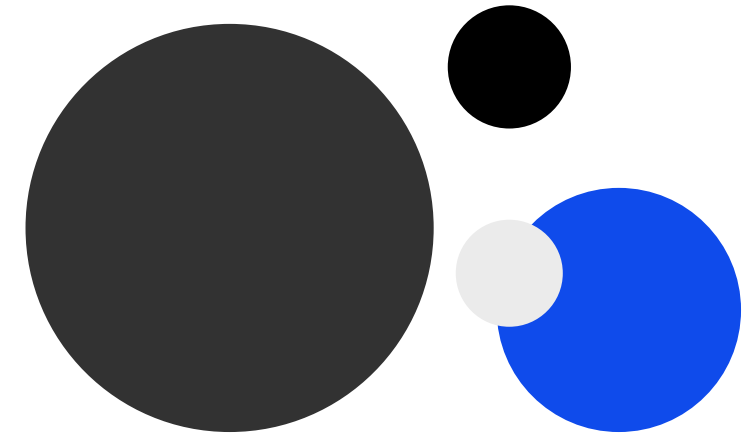
Reimburse requirement

- **Students must successfully pass the AE4 course.**
- **CPs must provide an endorsement for the student in writing to our PM.**
- **Students must have already paid the first semester of the UTS Insearch Academic Course.**



2020 Important dates

UIG English



AE 4 – for Semester 3

Commence	22 June
Late Enrolment	25 June
Class Finish	2 September



Live Panel Q&A

Our partner page

All content, information
and resources to help
make working with
UTS Insearch easier.

Areas of study

English Language
Business
Communication
Design & Architecture
Engineering
Information Technology
Science

Information about

Who we are
Alumni
Publications
Scholarships
International Campuses
Careers
Find an agent

Staff and students

Student extranet
eStudent
Staff Webmail
Staff Intranet
UTS Email
UTS Online
Channel Partners

Connect with us

1800 896 994
(within Australia)

+61 2 9218 8700
(International)





New partner page content

The essentials

- Course dates
- Entry requirements
- Course fees
- Accommodation prices
- Scholarships
- UTS Foundation Studies articulation
- Key contacts for partners
- Study Tours
- **News & Announcements**

Application resources

- Application form
- Link to 'online offer system'
- Submit an online application
- Essential admissions forms

Acceptance & pre-arrival

- Fee payment information
- Cost of living
- Accommodation
- Health cover (OSHC)
- Pre-arrival pack
- Orientation information

Marketing resources

- Logo and brand guidelines
- Brochures, flyers and guides
- Social media
- Videos
- Media articles (news clippings)



Information for partners

[Acceptance and pre-arrival](#)[Marketing resources](#)[Useful links](#)[Become a registered education agent](#)

Here you'll find everything you need as a partner to support student enquiries and applications.

We will regularly add new tools and resources to this page, so please keep visiting to ensure you have the latest information. If there's anything you can't find, either on this page or the website, please let us know by emailing marketing@insearch.edu.au

Essentials

[Important dates](#)[Entry requirements](#)[Course fees](#)[Accommodation prices](#)[Scholarships](#)[UTS Foundation Studies articulation](#)[Key contacts for partners](#)[Study Tours](#)[News & Announcements](#)

Keep up to date

All our monthly Intouch articles are now easily accessible **here!**

Find all our updates to:

- course changes
- student communications
- admissions
- recruitment



Who to contact

Admissions

registrar@insearch.edu.au

+61-2-9218-8689

Or

Stefani Sugiarto

Stefani.sugiarto@insearch.edu.au

Lilies Agustine

Lilies.agustine@insearch.edu.au



Thank you