



**Thanks for joining our
Remote Learning – Academic English
Counsellor Training Webinar!**

We'll be starting in a few moments...



**Remote
learning**

**Academic
English**

What we'll cover today



**Remote Learning -
ELT**



**Engagement and
Support**



**Assessment and
Articulation**



**A teacher's
perspective**



**A student's
perspective**



**Term dates
and important links**



Q&A

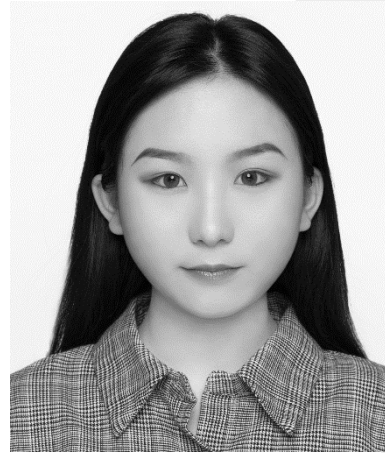
Meet our presenters



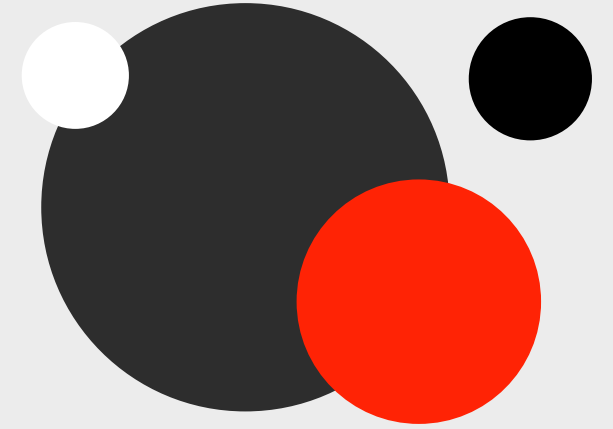
Jason West
Director of Studies
ELT



Franca Turrin
ELT Teacher



Yangxin Li
Student



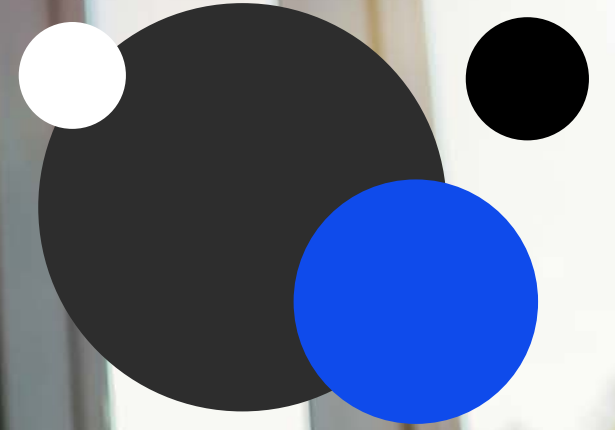
UTS Insearch vision


**To actualise potential and
enhance lives through the
power of learning, our actions
and our people.**



Remote learning Academic English

Remote learning
is different from
online learning.





**How our
remote
learning is
delivered**

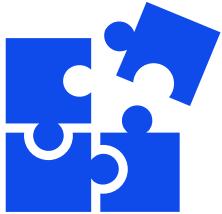


**More focus on
flipped learning and
blended learning.**

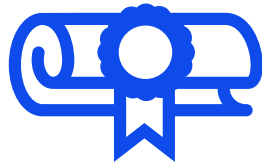
The original 16-week intensive
was based on face-to-face delivery

Our strengths in **Remote learning**

Our students continue to learn,
stay on track, and meet their
goals to go to UTS.



Adaptability



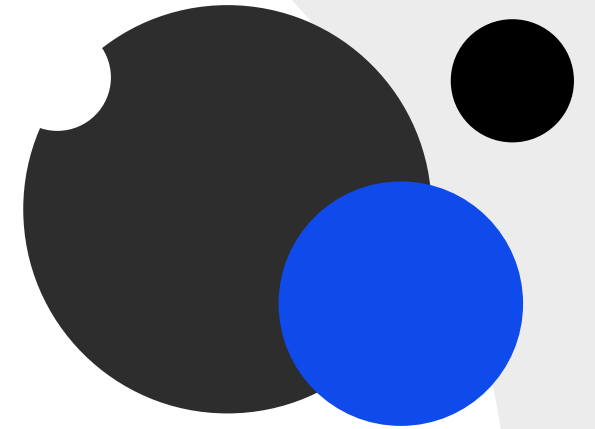
**Depth of experience
and teaching quality**



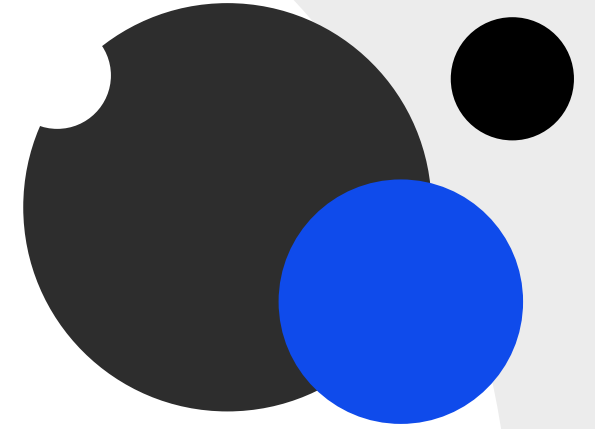
Technology skillset



21st Century skills



Engagement and support - Orientation



**Online
Orientation**
(Zoom)



Virtual meet and greet
for all students on the same level
create a sense of belonging



Meet a buddy
Students are placed in
breakout rooms to
form buddies

Engagement and support – Learning

Online tools (LMS)

Optimise use of our Learning Management Systems for course content ensure secure assessments and exams.

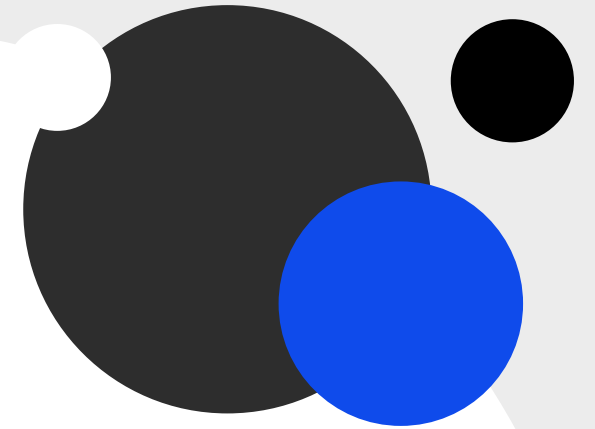
We use UTSONline (Blackboard), Canvas, and Zoom

Feedback and testing

Ensuring both formative (student receive feedback) and summative tests

HELPS (Self-Access)

Student Centre and Study Success Advisers have moved online to help students pass



Assessment and Articulation

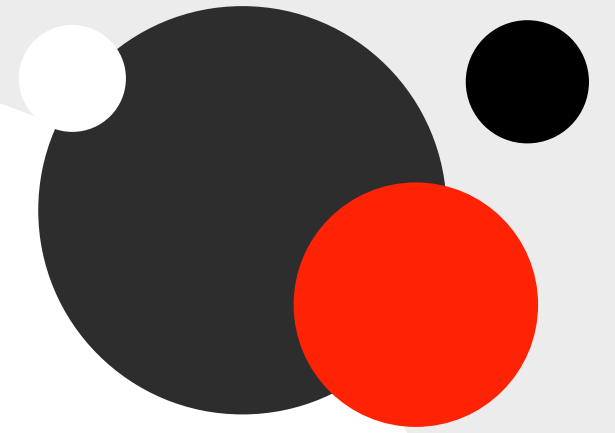
- ✓ **Placement testing**
Increased the validity of IELTS to 2 years
- ✓ **Online testing**
Pearson Test of English (PTE), IELTS and TOEFL IBT and **VEPT (new!)**
- ✓ **No GE**
Students without a GE (GEL), can undertake any of the above tests online
- 🚩 **Students still need to pass to progress to the next course or retake the course for the usual fee**

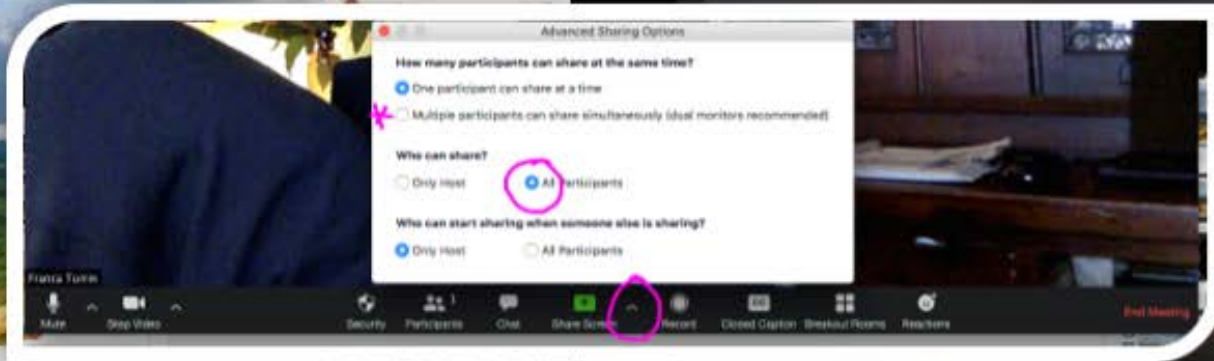
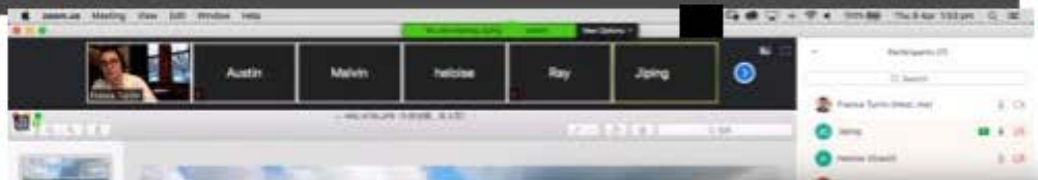
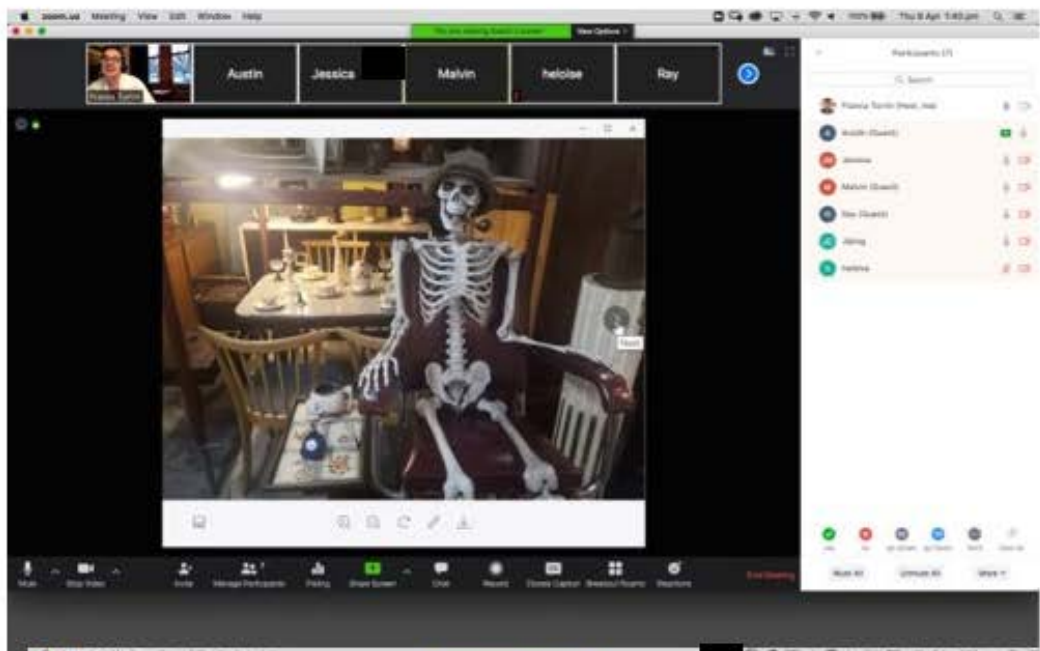
A teacher's experience

Franca Turrin, ELT



Where am I in the world?





Using One drive shared word doc with Course materials.

WRITING

A Read the text and find the main idea in the paragraph.

Over the past decade, Apple's designers have developed smaller, thinner and lighter products. As these products become more powerful, they are using less material to produce and are generating fewer carbon emissions. For example, the new 21.5-inch iMac is designed with 50 per cent less material and generates 50 per cent fewer emissions than earlier models. The iPad2 became 33 per cent thinner and up to 15 per cent lighter in just one generation, producing five per cent fewer carbon emissions.

Adapted from <http://www.apple.com/au/environment/>

B Close your book. In your own words, explain the main idea to your partner.

C In pairs, write down your version of the main idea

Document - Saved

view View Help Open in Desktop App Tell me what you want to do Editing

B I U A A ... Normal No Spacing Head

Paraphrasing

Group 1

Key words: Apple's, product, material, carbon emissions, iMac, iPad2.

Group 2

Kw: design, product, less material, develop

paraphrasing: Apple designed the new products with less materials for the past ten years, which

Group 3

Key words: carbon emission, thinner, less material.

Using One drive shared word doc with Course materials.

The image shows a presentation slide on the left and a Word document on the right, both displaying a language study activity. The slide is titled "LANGUAGE STUDY" and contains a text box with a paragraph about Apple products. Below the text box are six numbered questions. The Word document shows the original text from the slide, with handwritten annotations in pink and green. The annotations include underlining of key words, circles around specific words, and handwritten paraphrases and answers to the questions.

Slide Content:

LANGUAGE STUDY

Over the past decade, Apple's designers have developed smaller, thinner and lighter products. As those products become more powerful, they are using less material to produce and are generating fewer carbon emissions. For example, the new 21.5-inch Mac is designed with 50 per cent less material and generates 50 per cent fewer emissions than earlier models. The iPad became 25 per cent thinner and up to 10 per cent lighter in just one generation, producing five per cent fewer carbon emissions.

Compare your version to the original.

- 1 Which words are unchanged? *Apple iPad*
- 2 Which words are different from the original, but have the same meaning?
10 yrs = decade dev = improved
- 3 Which words are in a different word form?
developed = development
- 4 How many sentences did you write? *2.*
- 5 How many clauses did you write?
- 6 What are the subjects of each clause?

Word Document Content:

Key words: Apple's product material carbon emissions iPad?

Paraphrasing:
Apple company has improved their products portable and mighty in the past ten years, and they use less material in their productions, therefore carbon emissions are going down gradually with reduced use!

For instance, the new Mac has 50 per cent emissions less than old Mac. The iPad become more convenient than the last product.

Group 2
Key words: design, product, less material, develop

paraphrasing:...
Apple designed the new products with less materials for the past ten years, which the new generation became more functional and formidable.
For instance, apple developed the new Mac and iPad smaller, thinner and lighter than earlier editions and produce less carbon emission.

Group 3
Key words: *carbon, thinner, 50% less material, reduce 50% per cent carbon emission.*
Paraphrasing: *the apple product has been designed with less material and carbon emission has been reduced by new generation product.*

Word Association using Zoom chats



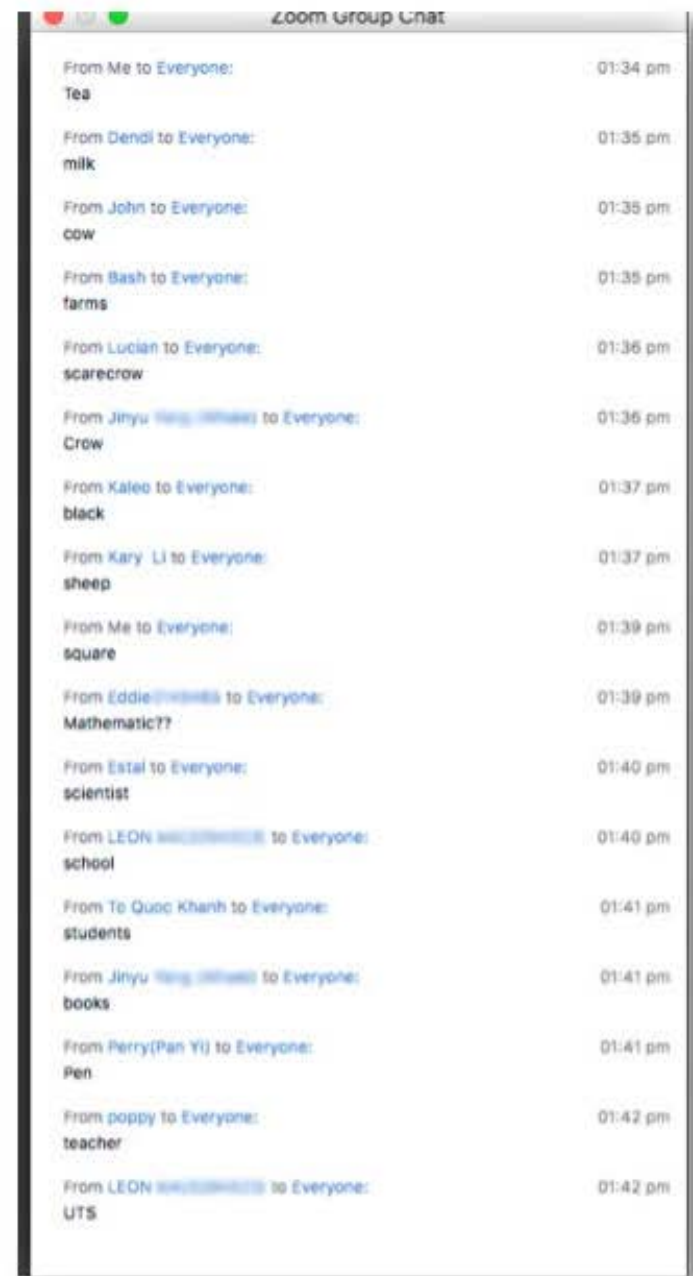
What is the first word
you think of ?

Synonyms

Antonyms

Collocations

©fturrin_2020



A student's experience

Yangxin Li



In summary

UTS Insearch is actualising the potential of our students by...

- ✓ Helping our students to stay on track
- ✓ Maintaining the quality of our courses and assessments
- ✓ Helping students to build 21st Century skills
- ✓ Training for students e.g. Zoom
- ✓ UTS Insearch continues to be the pathway to UTS

2020 term dates

Academic English

Terms	Start dates
Term 5	25 May
Term 6	29 June
Term 7	3 August
Term 8	7 September
Term 9	12 October
Term 10	16 November

TIP

Last enrolment dates
each Friday (9am) of
each week 1

[insearch.edu.au/programs/
english-language-programs](https://insearch.edu.au/programs/english-language-programs)



Q&A
with Jason,
Franca and
Yangxin



Who to contact

Your Partner Manager for any queries

insearch.edu.au/information-for-partners

A decorative graphic on the left side of the slide. It features a large blue circle with a white laptop icon inside. This blue circle is overlaid on a larger grey circle. To the left of the blue circle is a red curved shape. There are several smaller circles: a white one at the top left, a black one on the right side of the blue circle, a white one at the bottom left, and a blue one at the bottom right.

Register now!

upcoming webinars

Remote Learning – Academic programs

Wednesday 6 May

10am – 10.45am AEST

UTS Updates

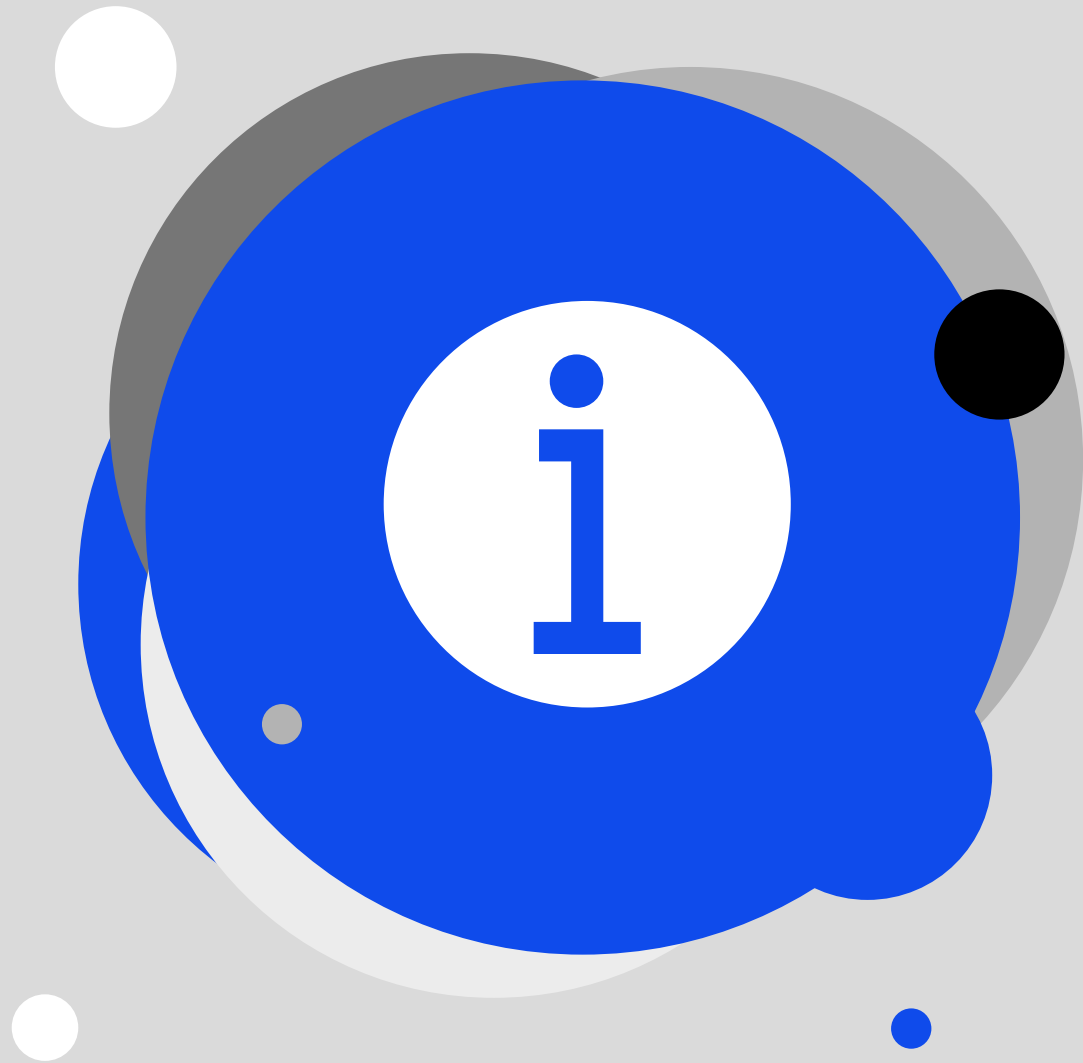
Thursday 7 May

10am – 10.45am AEST

Student Support and Welfare

Wednesday 13 May

10am – 10.45am AEST



Keep **updated!**

For all our latest updates go to:

insearch.edu.au/au/coronavirus

[Insearch.edu.au/remote-learning](https://insearch.edu.au/remote-learning)

