

Installing the LockDown Browser

What is this guide for?

LockDown Browser is a secured browser for taking quizzes and tests in Canvas. It prevents you from printing, copying, going to another URL, or accessing other applications during an assessment.

If a Canvas quiz requires you to use a LockDown Browser when taking the quiz, you will not be able to take the quiz with a standard web browser such as Safari, Chrome, etc. Therefore, you must install the LockDown browser as described in this document.

Who is this guide for?

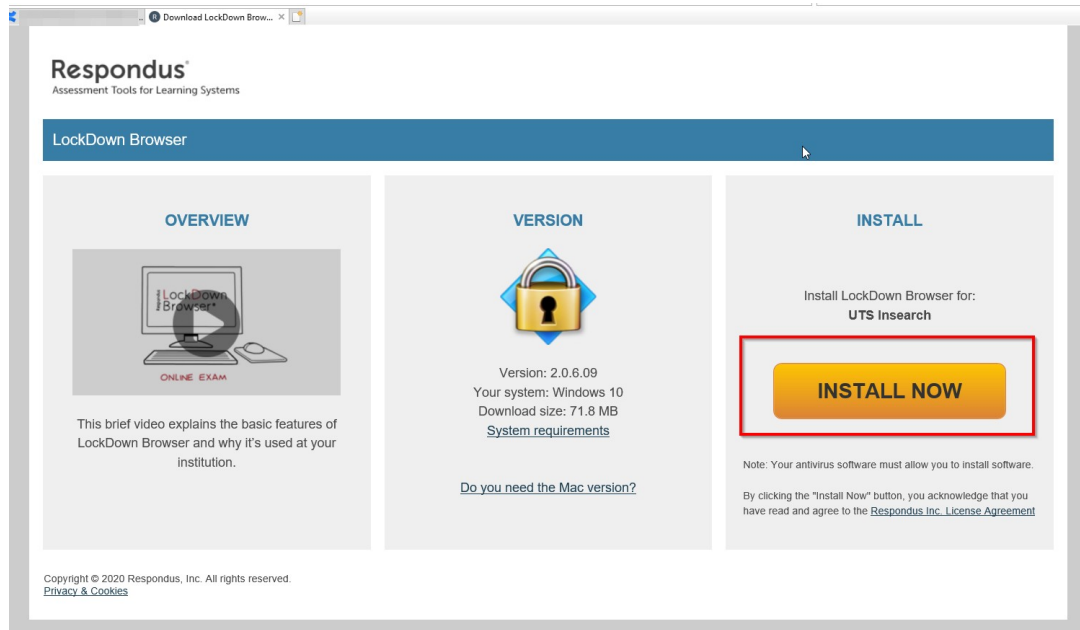
UTS College students using:

- A. Microsoft Windows or
- B. Mac OS

Your internet must be working to download the application.

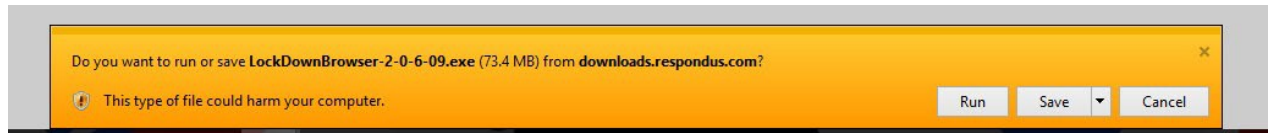
How to install?

1. Navigate to your web search engine and enter the following URL:
<https://download.respondus.com/lockdown/download.php?id=269556586>
2. Once the home page is displayed, click **Install Now**.

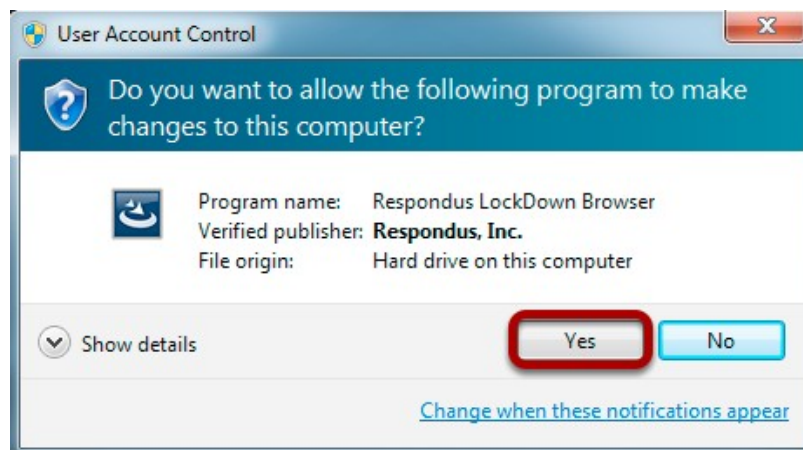


A. MICROSOFT WINDOWS

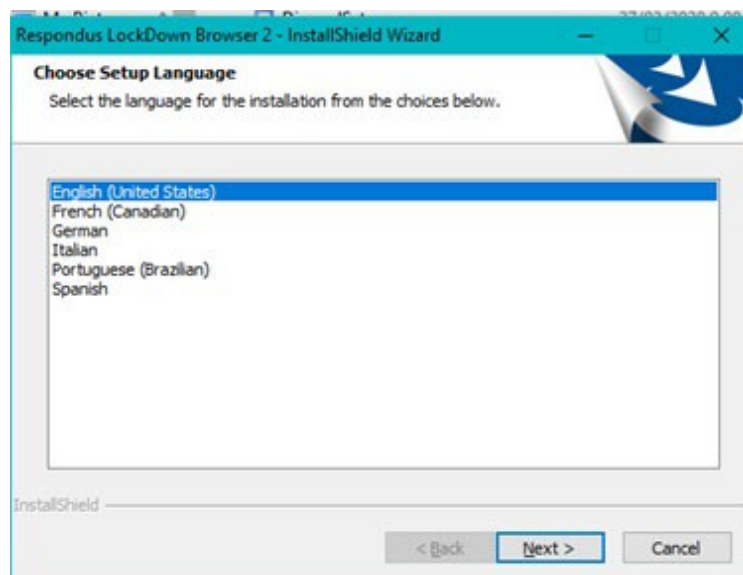
- Once the exe is downloaded, click **Run** to run the file.



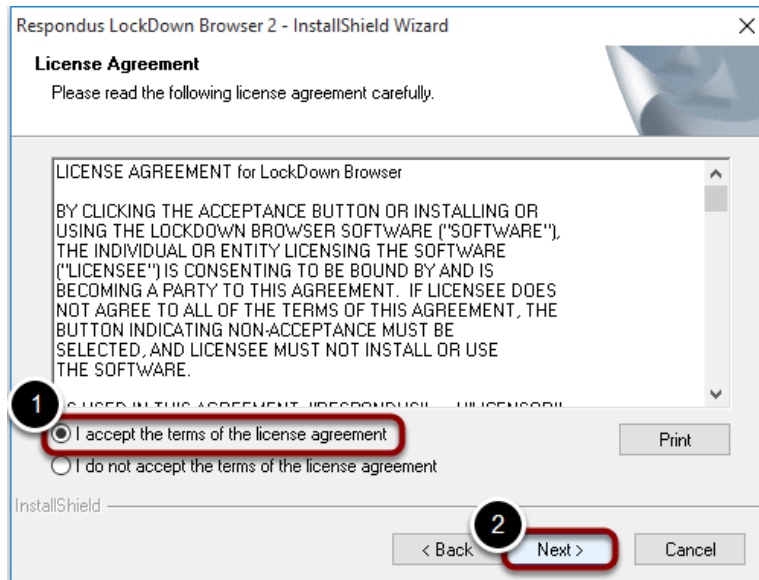
- Once the installation is successfully completed, click **Finish** to finalise the installation.



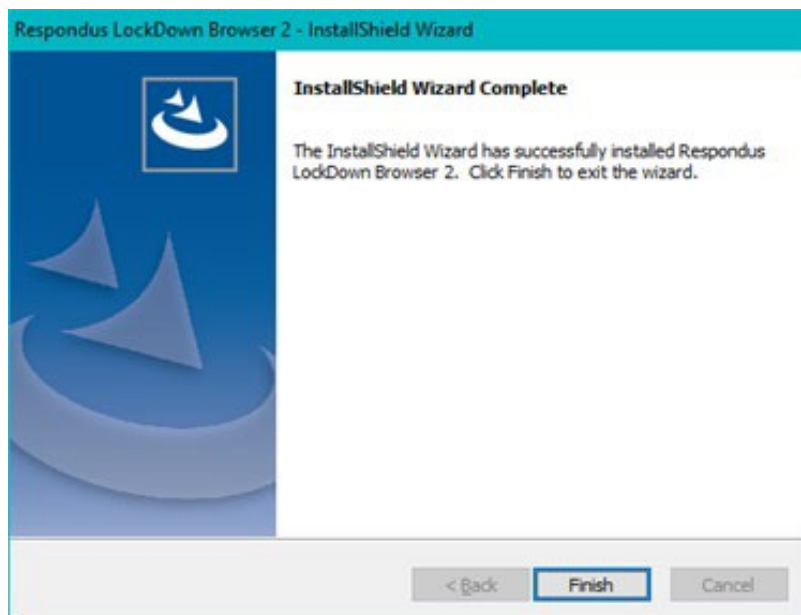
- Select English (United States) as the default language and click **Next** to run the Installation Wizard.



- Accept the Terms of license agreement and click **Next** to run the Installation Wizard.



- Once the installation is successfully completed, click **Finish** to finalise the installation.

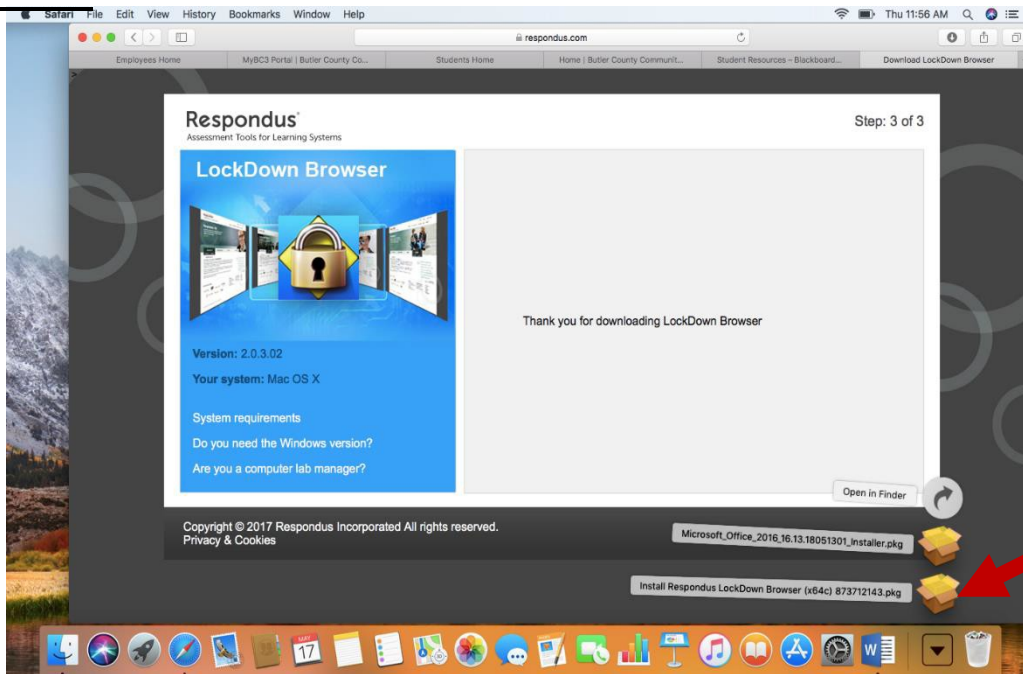


8. If you have specified during the installation, a shortcut will appear on your Desktop.

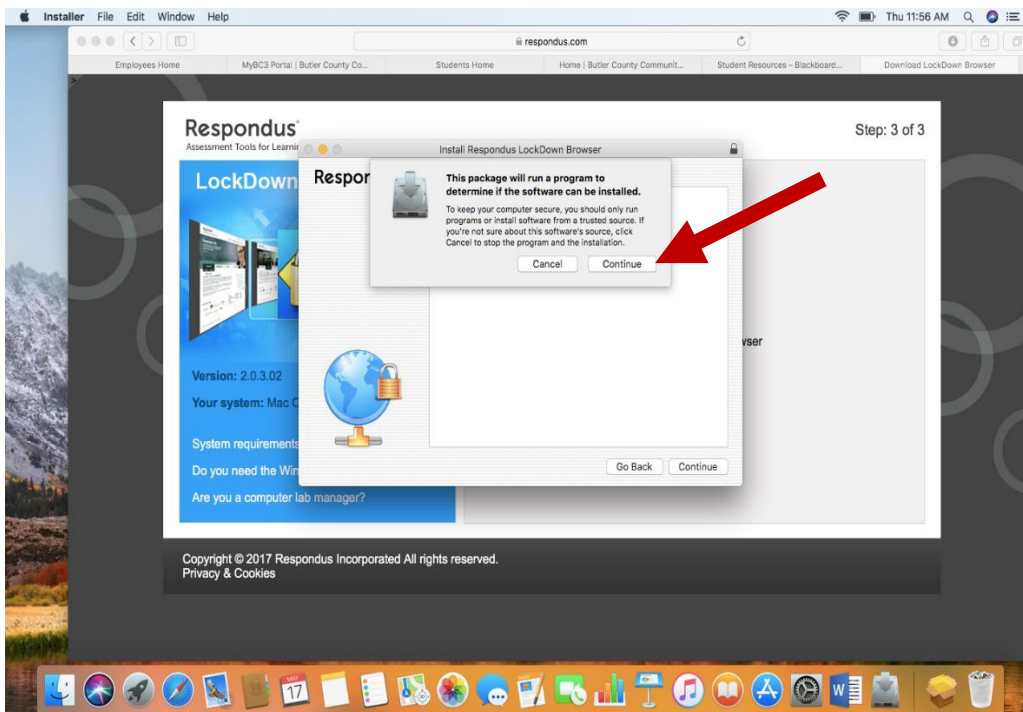


B. MAC OS

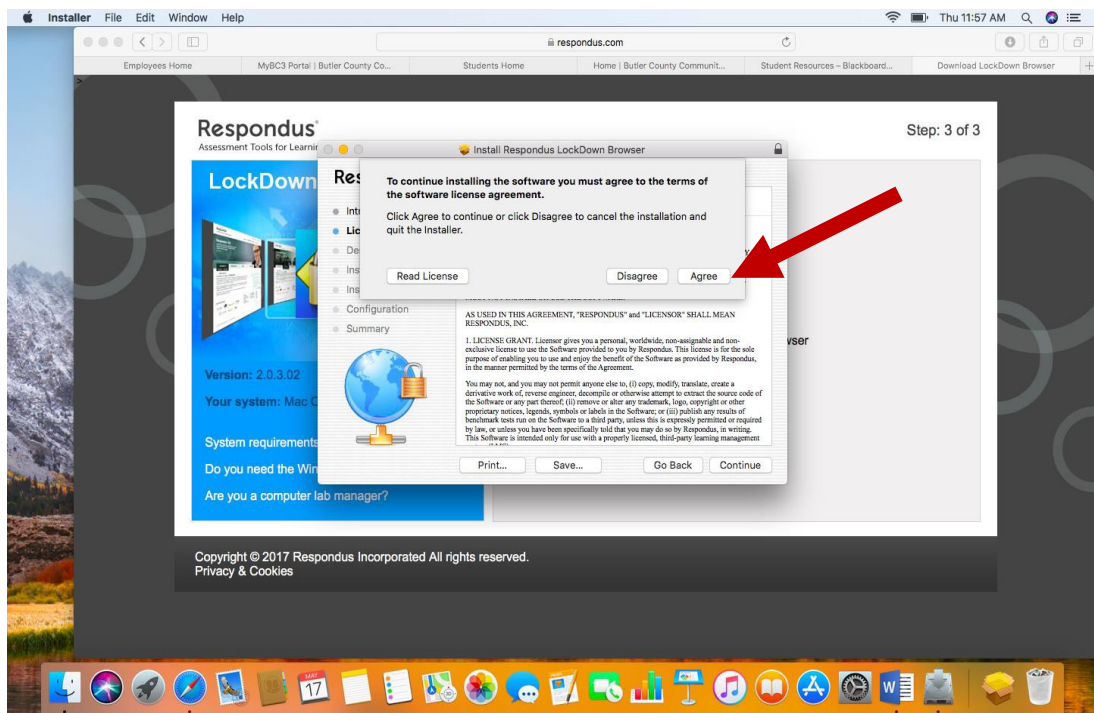
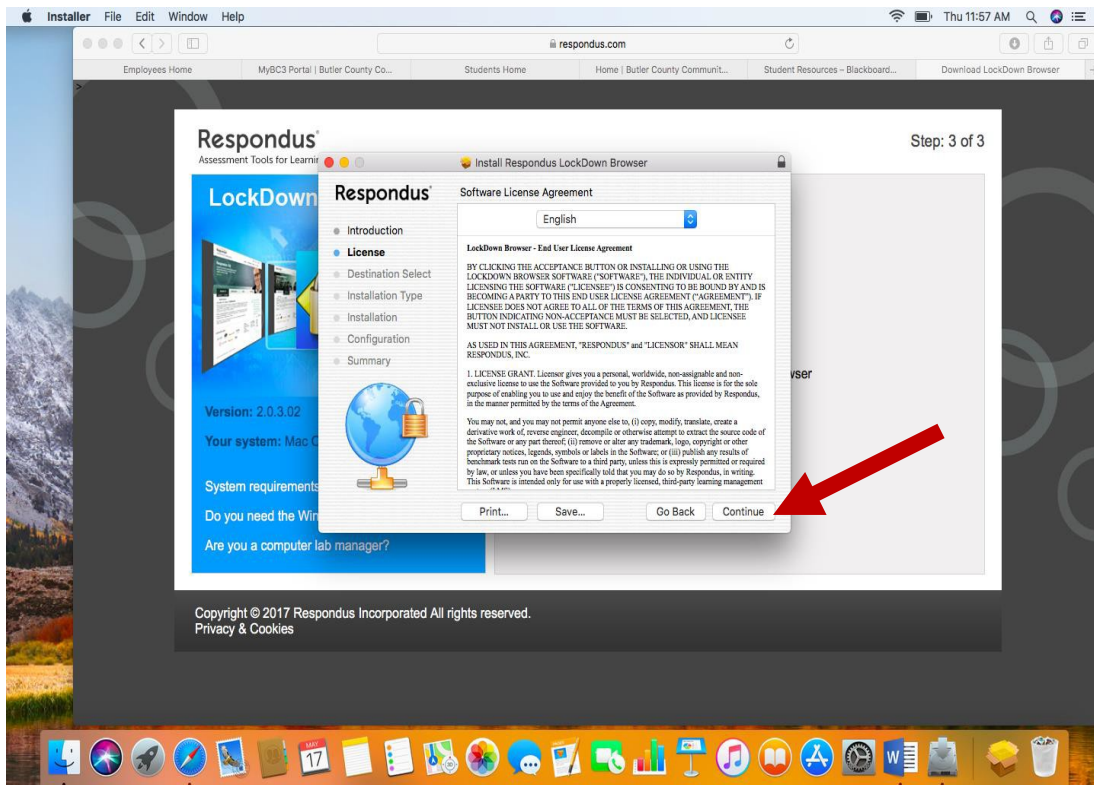
3. Click on **Downloads** and select the **Install Respondus LockDown Browser**.



4. Select **Continue** in the popup and then **Continue** in the Respondus window.

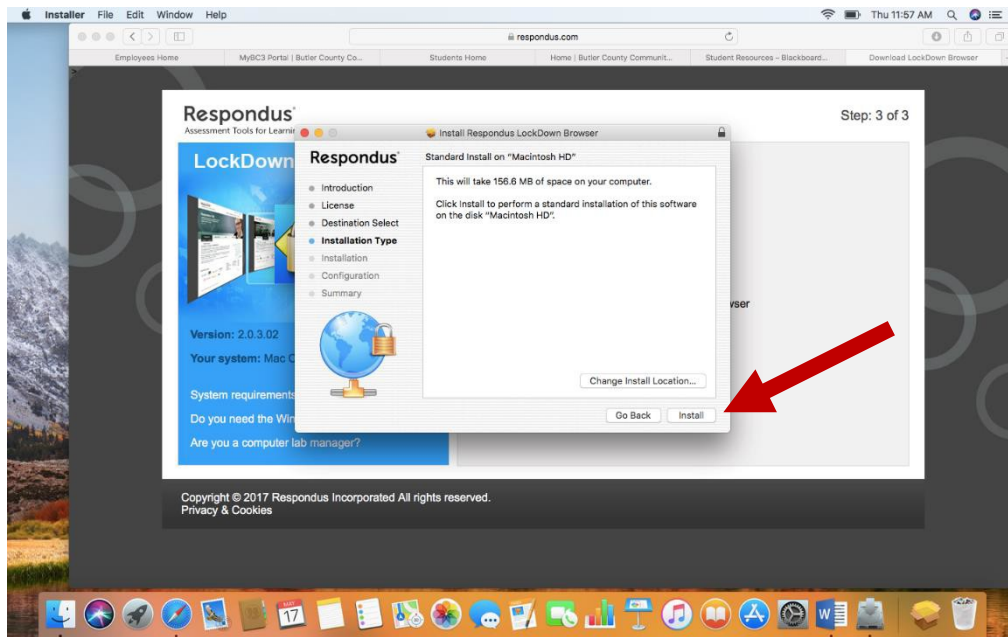


5. Select **Continue** to the next popup to agree to the License Agreement and click **Agree**.



ITDS Quick Reference Guide

6. Now select the **Install** button to begin installing the software.



7. Your computer may ask you to install the software by entering your password for your computer. Enter your password and click **Install Software**. You will receive an Installation successful message. Click **Close**.

